

# CMP 250

Fully Automatic Espresso Machine

---

## Table of contents

---

<b>Important safety precautions</b>	<b>3</b>
<b>Environmental protection</b>	<b>4</b>
Environmentally-friendly disposal	4
<b>Getting to know the appliance</b>	<b>5</b>
Included in delivery	5
Assembly and components	6
Display and operating controls	7
Function selector positions	7
Symbols	7
Colours and display	8
Additional information <b>i</b> and <b>i</b> <sup>®</sup>	8
Accessories	8
<b>Switching the appliance on and off</b>	<b>9</b>
Main switch	9
Hibernate mode	9
Activating the appliance	9
<b>Starting the appliance</b>	<b>10</b>
Setting the language	10
Setting the water hardness	10
<b>Pulling out the appliance</b>	<b>11</b>
<b>Water filter</b>	<b>11</b>
Operation with or without a water filter	11
Inserting the water filter	11
<b>Filling the water tank and the bean container</b>	<b>12</b>
<b>Preparing beverages</b>	<b>13</b>
Beverage selection	13
Preparing coffee using freshly ground beans	13
Preparing two cups at the same time	14
Preparing coffee using ground coffee	14
Preparing a coffee with milk	15
Preparing milk froth and warm milk	15
Preparing hot water	16
Setting the grinding level	16
<b>Individual beverages</b>	<b>17</b>
<b>Child lock</b>	<b>18</b>
Activating the child lock	18
Deactivating the child lock	18
<b>Basic settings</b>	<b>19</b>
<b>Daily maintenance and cleaning</b>	<b>21</b>
Daily maintenance	21
Cleaning the brewing unit	21

<b>Service programmes</b>	<b>22</b>
Cleaning the milk system	23
Cleaning	24
Descaling	24
Cleaning and descaling	25
<b>Simple troubleshooting</b>	<b>26</b>

Additional information on products, accessories, replacement parts and services can be found at [www.gaggenau.com](http://www.gaggenau.com) and in the online shop [www.gaggenau-eshop.com](http://www.gaggenau-eshop.com)

## **⚠ Important safety precautions**

Please read carefully, follow and retain the operating instructions. When passing on the appliance, enclose these instructions.

This appliance is designed for processing normal household quantities in the home or similar quantities in non-industrial applications. Non-industrial applications include, for example, use in employee kitchens in shops, offices, agricultural and other commercial businesses, as well as use by guests in boarding houses, small hotels and similar dwellings.

Only use the appliance indoors at room temperature and up to 2000 m above sea level.

This appliance may be used by children aged 8 or over and by people who have reduced physical, sensory or mental abilities or inadequate experience and/or knowledge, provided they are supervised or have been instructed on how to use the appliance safely and have understood the resulting dangers. Children under 8 years of age must be kept away from the appliance and the power cord and must not operate the appliance. Children must not play with the appliance. Cleaning and user maintenance may not be carried out by children, unless they are aged 8 years or older and are supervised.

### **Risk of electric shock!**

- The appliance may only be connected to a power supply via a correctly installed socket with earthing. Ensure that the protective conductor system of the domestic electricity supply has been correctly installed.
- Connect and operate the appliance only in accordance with the specifications on the rating plate. If the power cord of this appliance is damaged, it must be replaced with a special connecting line, which is available from our after-sales service.
- Do not use if the power cable or appliance is damaged. If a fault occurs, pull the mains plug or switch off the mains voltage immediately.
- To prevent hazards, the appliance may be repaired by our customer service only.
- Never immerse the appliance or mains cord in water.

### **Hazard due to magnetism!**

The appliance contains permanent magnets which may affect electronic implants, e.g. heart pacemakers or insulin pumps. Persons wearing electronic implants must maintain a minimum distance of 10 cm from the appliance and from the following parts upon removal: milk container, milk system, water tank and brewing unit.

### **Risk of suffocation!**

Do not let children play with packaging material. Store small parts safely as they can be easily swallowed.

### **Risk of injury!**

- Do not reach into the grinding unit.
- Be careful not to jam your fingers when closing the door.
- Improper use of this appliance may result in injury.

### **Risk of burns!**

The milk system becomes very hot. After use, allow it to cool down first before touching it.

---

## Environmental protection

---

### Environmentally-friendly disposal

Dispose of packaging in an environmentally-friendly manner.

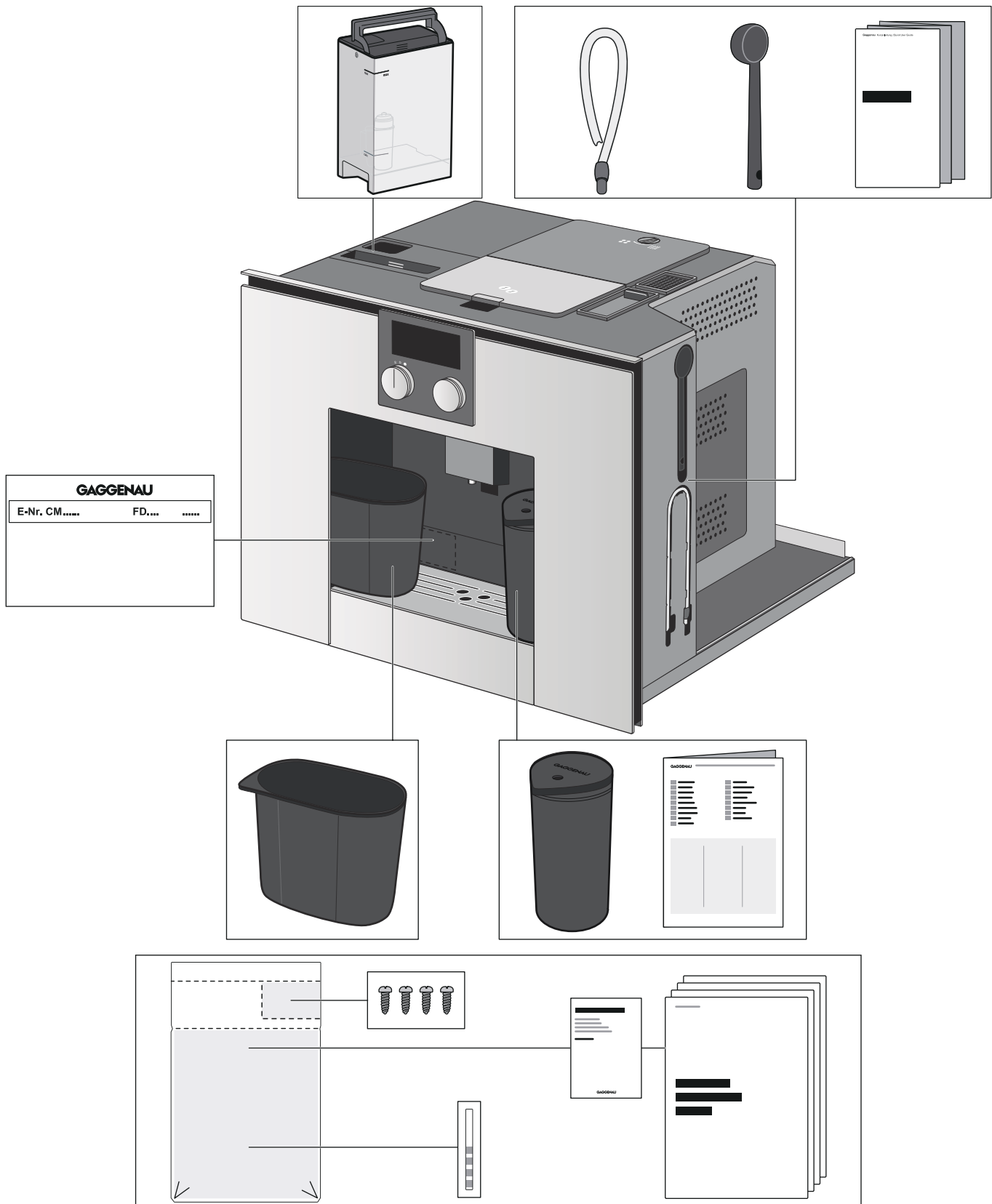


This appliance is labelled in accordance with European Directive 2012/19/EU concerning used electrical and electronic appliances (waste electrical and electronic equipment - WEEE). The guideline determines the framework for the return and recycling of used appliances as applicable throughout the EU.

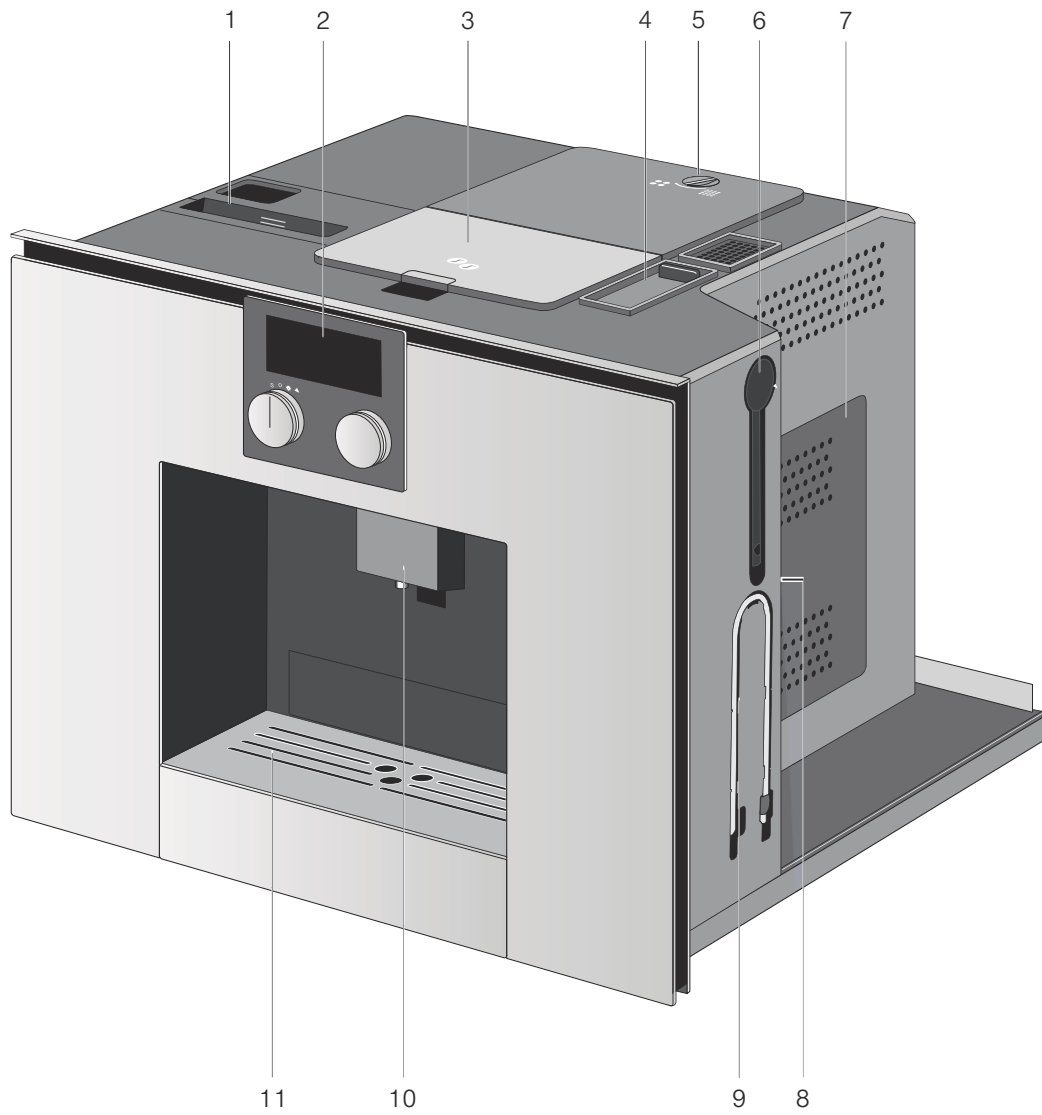
## Getting to know the appliance

Use this section to familiarise yourself with your new appliance. The control panel and the individual controls are explained here. You will also find information about the pull-out system and the accessories.

## Included in delivery

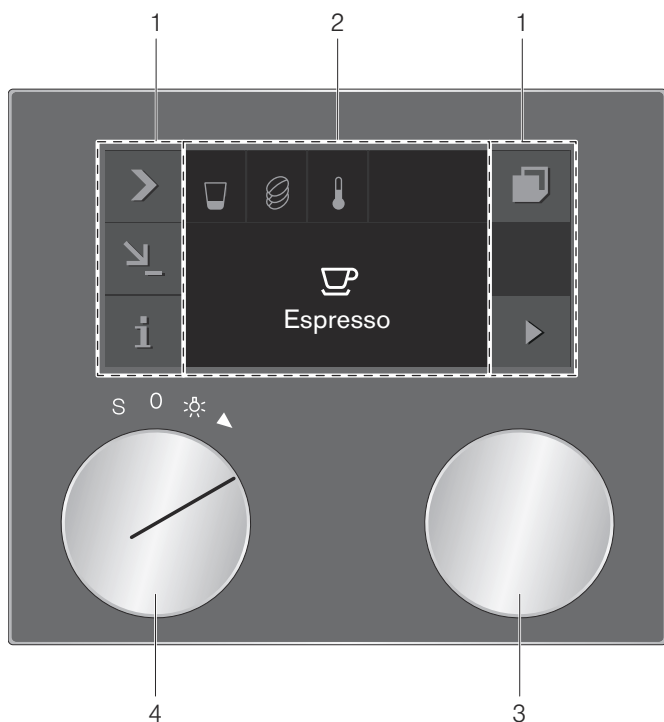


## Assembly and components



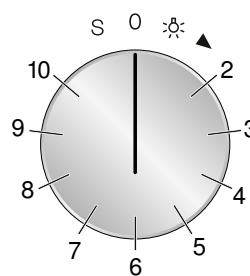
1	Water tank with cover
2	Display and controls
3	Bean container
4	Ground coffee drawer
5	Grinding level adjustment
6	Storage compartment for measuring spoon
7	Brewing unit access door
8	Storage compartment for quick reference guide
9	Storage compartment for milk hose
10	Coffee dispenser and milk frother, height-adjustable
11	Shelf

## Display and operating controls



1	Control panel	These areas are touch sensitive. Touch a symbol to select the corresponding function.
2	Display	The display shows, for example, current settings and options.
3	Rotary selector	You can select the desired beverage and other settings using the rotary selector.
4	Function selector	You can use the function selector to call up your saved favourite beverages or the basic settings.

## Function selector positions



Position	Function
0	Zero setting
☀	Light
2	Beverage selection
3 - 10	Memory locations for individual beverages
S	Service programmes/basic settings

## Symbols

The following overview details the symbols that are the most used when operating the appliance.

Symbol	Function
▶	Start
■	Stop
✕	Cancel
✓	Confirm/save settings
>	Selection arrow
📄	Pull out the appliance
i	Call up additional information
↘	Edit settings
🔒	Child lock

## Colours and display

### Colours

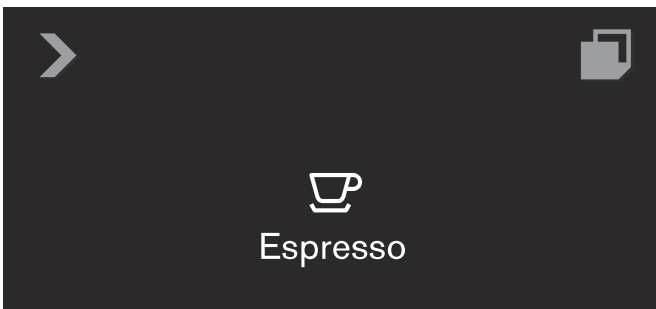
The different colours are used to guide the user in the relevant setting situations.

Orange	Initial settings Main functions
Blue	Basic settings Cleaning
White	Values which can be set

### Display

The symbols, values and displays may change, depending on the situation.

Zoom	Values and symbols which have just been selected will be displayed in a larger font.
Reduced display	After a short time, the display is reduced and only the most important information is displayed. This function is activated in the basic settings ex works and can be deactivated.



## Additional information **i** and **i**<sup>®</sup>

By touching the **i** symbol, you can call up additional information.

During operation, you will, for example, receive information regarding the number of beverages dispensed previously.




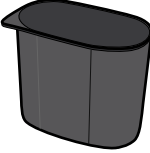
If the function selector is set to **S**, you will, for example, receive information about when the appliance needs to be descaled or cleaned or when the water filter needs changing. You can use this information to start up a service programme that is due soon, for example.

The **i**<sup>®</sup> symbol appears for important handling guidelines. New messages are also displayed for several seconds on the display. A list of messages can be displayed by touching the **i**<sup>®</sup> symbol. The message disappears when the required action has been carried out.

## Accessories

The fully automatic espresso machine has trays to store accessories and the quick reference guide in the appliance. These are on the right-hand side and are accessible when the appliance is in pull-out position 1 (see section Pulling out the appliance).

**The appliance includes the following accessories as standard:**

	<b>Measuring spoon</b> For adding ground coffee.
	<b>Milk hose</b> For connecting the milk container and for putting into milk cartons and milk bottles.
	<b>Milk container</b> Volume capacity 0.5 litres.
	<b>Descaling container</b> For placing under the milk frother during the descaling programme. Dishwasher-safe.

**The following accessories can be reordered by contacting after-sales service:**

- Water filter (order no.: 00467873)
- Cleaning tablets (order no.: 00311808)
- Descaling tablets (order no.: 00310967)

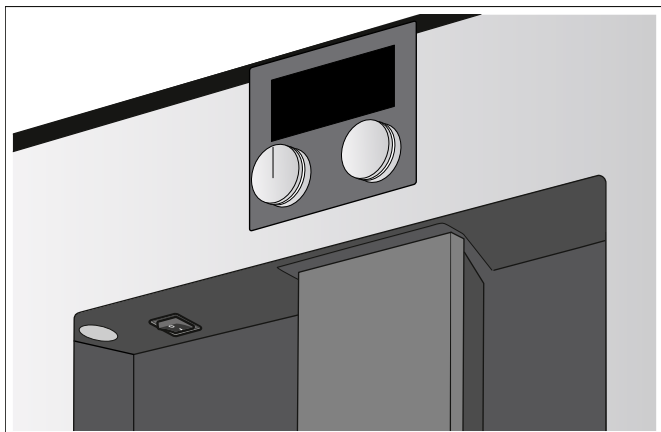


---

## Switching the appliance on and off

---

### Main switch



The main switch is used to switch the appliance on and off.

If the appliance is switched off at the main switch, the power supply is interrupted.

The appliance is programmed so that it automatically switches off after 30 minutes. This time period can be changed (see Automatic shut-off in section Basic settings).

The appliance rinses automatically when it is switched on at the main switch. Exception: The appliance was only switched off a few minutes beforehand.

**Note:** Do not press the main switch during operation. If you want to manually switch off the appliance, you must first set the function selector to **0** so that it rinses automatically. Then switch off the appliance using the main switch.

### Hibernate mode

The appliance goes into hibernation mode if the function selector is turned to **0** or if the child lock is activated.

The brightness of the display is dimmed in hibernation mode.



#### Notes

- In the basic settings, you can set whether the Gaggenau logo is to be displayed during hibernation mode (see section Basic settings).
- The brightness of the display depends on the vertical viewing angle. You can adjust the display using the "Brightness" setting in the basic settings.

### Activating the appliance

To exit hibernation mode, turn the function selector or touch the control panel.

You can now set the required function. Please refer to the corresponding sections for information on how to set functions.

#### Notes

- The hibernation mode display will reappear if no setting is made for a long period of time after activation. The display light goes out.
- If no drip tray is inserted, the appliance cannot be switched on and no water will flow out of the coffee dispenser. The message "Insert trays" appears. This message also appears if the drip tray is pulled out during hibernation mode. The message disappears when the drip tray is reinserted. The appliance returns to hibernation mode.

---

## Starting the appliance

---

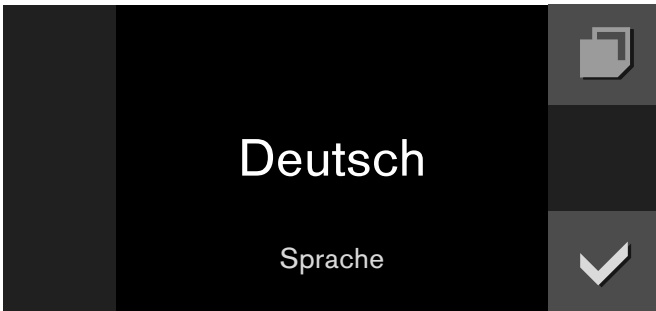
**Note:** Only use the appliance in frost-free areas. If the appliance was transported or stored at temperatures below 0 °C, you must wait for at least 3 hours before using it.

The appliance must be fully installed and connected to the mains.

## Setting the language

### Notes

- The language selection appears automatically when first switched on after connection to a power outlet.
  - You may change the language at any time (see section Basic settings).
- 1 Switch on the appliance at the main switch. The preset language appears in the display.



- 2 Turn the rotary selector to select the required display language.
- 3 Confirm with ✓.

The setting is saved.

**Note:** If the language is changed, the system restarts. This takes a few seconds.

"Operation complete" appears in the display. Confirm with ✓. The appliance enters hibernation mode and the hibernation mode display appears. The appliance is now ready for operation.

## Setting the water hardness

It is important to set the water hardness correctly, so that the appliance indicates accurately when the descaling programme should be run. The default water hardness is level 4. If a water softener is installed in the house, please set the water hardness to level 3. You can check the water hardness using the enclosed test strip or by asking your local water supplier.

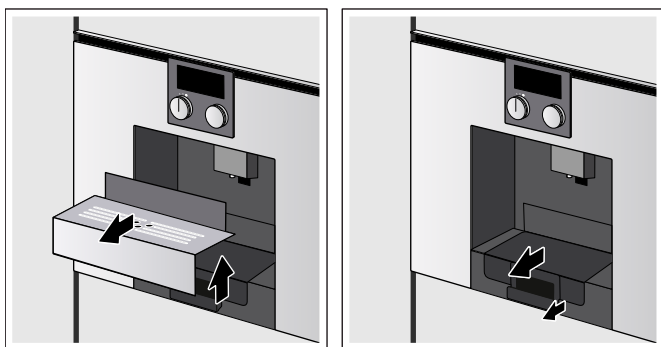
- 1 Briefly immerse the enclosed test strip in fresh tap water, leave it to drip off and read off the result after 1 minute.
- 2 Rotate function selector to **S**.
- 3 Use the rotary selector to select "Basic settings" and touch the ✓ symbol.
- 4 Use the rotary selector to select "Water hardness".
- 5 Touch the \\_ symbol.
- 6 Using the rotary selector, set the measured water hardness.
- 7 Press ✓ to confirm.

The setting is saved. Touch **X** in order to exit the basic settings.

## Pulling out the appliance

The appliance can be pulled out from the built-in unit. There are two options:

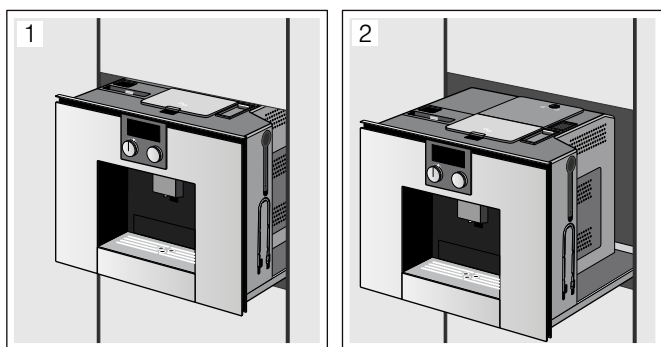
- Turn the function selector to ☒ or position 2 and touch the ☐ symbol (the appliance must be switched on to do this)  
- or -
- Remove the shelf and pull on the handle below that is now accessible (the appliance must not be switched on to do this)



The appliance is in pull-out position 1.

This position allows you to load water, beans, ground coffee and cleaning/descaling tablets and remove or replace the accessories and quick reference guide from the right-hand side of the unit.

If you need to pull the appliance out fully, press the ☐ symbol again and manually move the appliance into pull-out position 2 or simply pull the appliance all the way out using the handle.



In pull-out position 2, the brewing unit can be removed and the grinding level adjusted. Now push the appliance back into the built-in unit as far as it will go.

The automatic pull-out function is blocked during the brewing process.

## Water filter

### Operation with or without a water filter

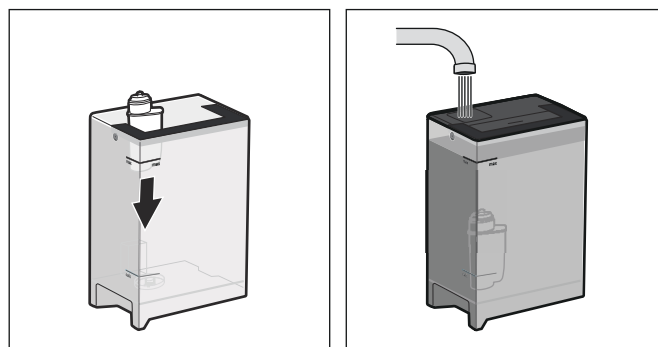
You can use the appliance with or without a water filter. To ensure that the descaling display of the appliance functions correctly, you must state in the basic settings whether a water filter is used.

- 1 Turn the function selector to **S**.
- 2 Select "Basic settings" using the rotary selector.
- 3 Touch the ✓ symbol.
- 4 Select "Water filter" using the rotary selector.
- 5 Touch the ☐ symbol.
- 6 Use the rotary selector to select either "Available" (with water filter) or "Not available" (without water filter).
- 7 Confirm with ✓.  
The setting is saved.
- 8 Touch the ✕ symbol to exit the basic settings menu.

### Inserting the water filter

New water filters must always be rinsed after being fitted.

- 1 Turn the function selector to **S**.
- 2 Select "Water filter change" using the rotary selector.
- 3 Touch the ✓ symbol.
- 4 Fit the water filter in the water tank and then fill the tank with water up to the "max" mark.



- 5 Touch the ✓ symbol.
- 6 Place a 0.5-litre container under the coffee dispenser.
- 7 Confirm using ✓ and start by using ▶.

The water first runs through the filter to rinse it and then into the container. After the rinsing process, confirm with ✓ and empty the container; the appliance is once again ready for use.

Rinsing the filter also activates the setting for the "Change water filter" display. When the display "Please change water filter" is shown, or at the latest after two months, the filter is no longer effective. It needs to be replaced for reasons of hygiene and so that the appliance does not experience a build-up of limescale (which could damage the appliance).

New filters can be obtained from the after-sales service (see section Accessories).

Detailed information on the water filter can be found in the enclosed filter instructions.

**Note:** If the appliance has not been used for a long period of time (due to holidays, for example), the filter that is fitted should be rinsed before using the appliance. To do this, simply dispense a cup of hot water.

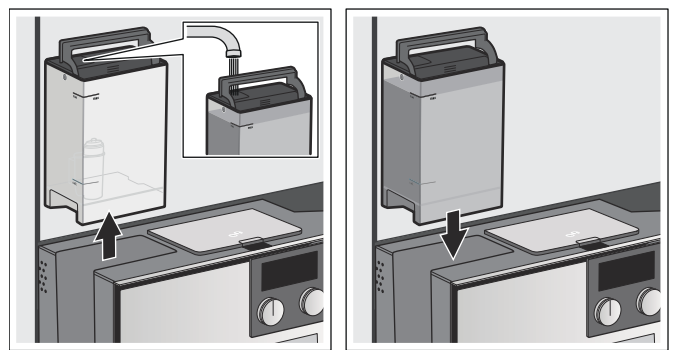
---

## Filling the water tank and the bean container

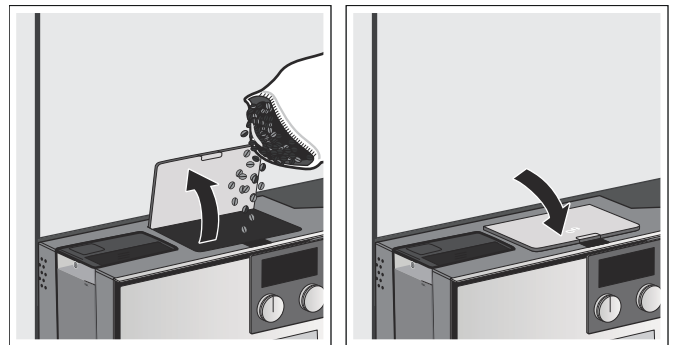
---

Using your appliance, you can prepare coffee using freshly ground coffee beans or ground coffee. Coffee beans can be stored in the bean container for several days without losing their aroma. Only fill up the ground coffee shortly before preparing the beverage (see section Preparing coffee using ground coffee).

- 1 Switch on the appliance at the main switch.
- 2 Turn the function selector to ☼.
- 3 Touch the ☐ symbol.  
The appliance slides into pull-out position 1.
- 4 Remove the water tank and fill it with fresh, still, cold water. Re-insert the water tank.



- 5 Open the cover of the bean container, fill it with beans and then shut the cover again.



**Note:** Coffee beans that have been glazed or caramelised, or that contain other sugary additives, block the brewing unit. Only use pure bean mixes that are suitable for use in fully automatic espresso machines.











- 6 Slide the appliance into the built-in unit as far as it will go.

## Preparing beverages




### Beverage selection

#### Notes

- When first using the appliance or when it has not been used for a long time, the first cup of coffee does not have the full aroma.
- After starting up the appliance, a fine-pored and firm "crema" will be achieved continuously after several cups have been dispensed.
- The appliance is programmed with the standard factory settings for optimal operation.

	Espresso	Concentrated coffee. Serve in small, thick-walled cups. Preheat cups with hot water.
	2x espresso	For preparing two cups of espresso at the same time. Place the cups next to each other under the coffee dispenser.
	Coffee	Coffee
	2x coffee	For preparing two cups of coffee at the same time. Place the cups next to each other under the coffee dispenser.
	Hot water	For preparing hot drinks, e.g. tea, or to preheat cups.
	Milk froth	For preparing speciality white coffees.
	Warm milk	As a beverage or as an ingredient in special coffee beverages.
	White coffee	½ coffee + ½ milk; best served in a wide-rimmed cup.
	Latte macchiato	Equal parts espresso and milk froth; topped up with milk; best served in a tall glass.
	Cappuccino	⅓ espresso + ⅓ milk + ⅓ milk froth; best served in a cup.

You may be able to select further options depending on your choice of beverage:

	Size	small - normal - large
	Strength	mild - normal - strong - very strong - extra strong; not available for milk froth, warm milk and hot water
	Temperature	hot - very hot - extra hot; not available for milk froth and warm milk

**Note:** For certain settings, the coffee is prepared in two stages ("Aroma function"; it is identified with the display "2x"). Wait until the process is fully completed.

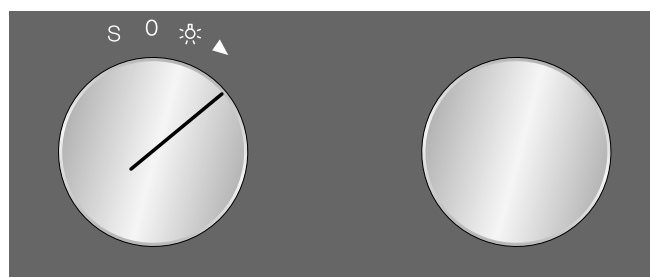
### Aroma function

The longer the coffee is brewed, the more bitter substances and unwanted flavours are released. The taste and digestibility of the coffee is thus affected. Your appliance therefore has a special Aroma function for very strong coffee. After half the requested volume has been prepared, coffee is ground and brewed once more, so that only the palatable and easily digestible flavours are released.

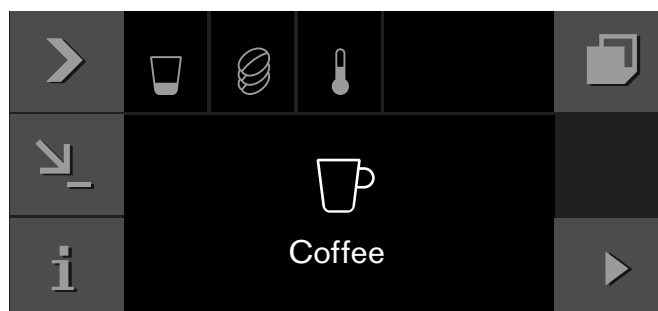
### Preparing coffee using freshly ground beans

The appliance must be switched on. The water tank and bean container must be filled.

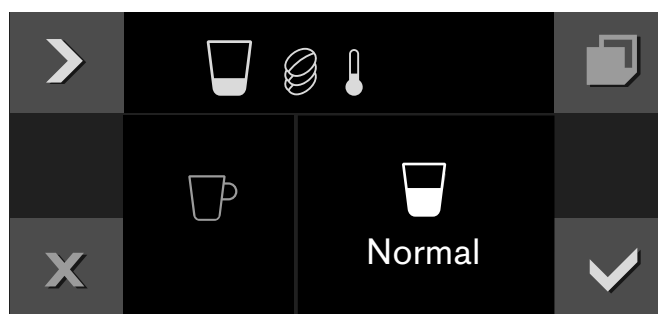
- 1 Turn the function selector to position 2.



- 2 Use the rotary selector to select the desired beverage, e.g. coffee.

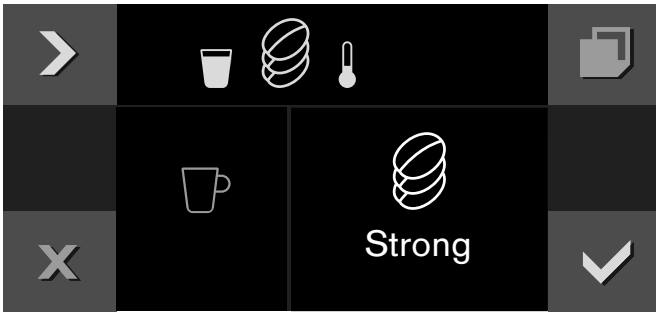


- 3 Place a cup under the coffee dispenser.
- 4 Touch the > symbol.
- 5 Set the quantity using the rotary selector.



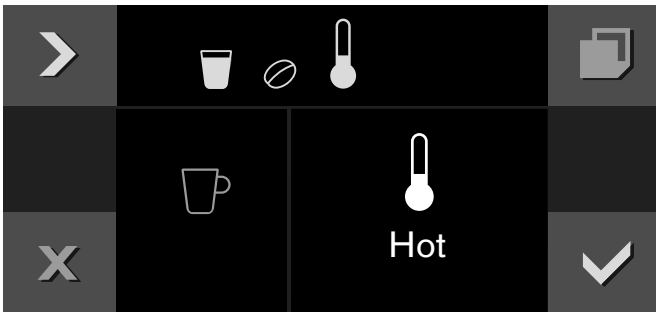
- 6 Touch the > symbol.

7 Set the strength using the rotary selector.



8 Touch the > symbol.

9 Set the temperature using the rotary selector.



10 Confirm the settings using ✓.

11 Press ▶ to start.

The beverage is brewed and then runs into the cup.

#### Notes

- While the beverage is dispensed, the ■ symbol is displayed. Touch this symbol to stop the beverage being prepared.
- Using the ↵ symbol, you can save the current beverage: touch the ↵ symbol, turn the function selector to a free memory location, save the entry (see section Individual beverages).

## Preparing two cups at the same time

- 1 Turn the function selector to position 2.
- 2 Use the beverage selector to select either "2x coffee" or "2x espresso".
- 3 Place a cup under each of the two coffee dispensers.
- 4 Press ▶ to start.  
- or -  
First touch the > symbol, then use the rotary selector to set the quantity, strength and temperature and confirm using ✓.

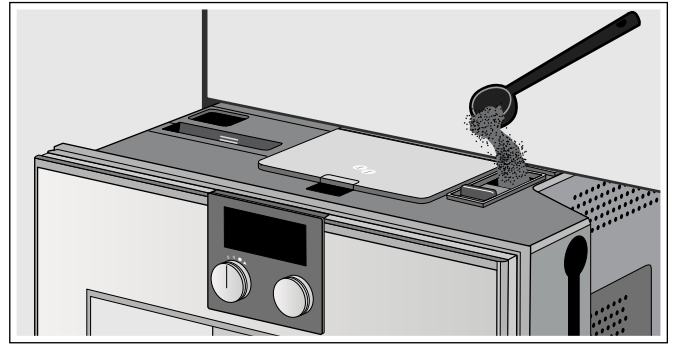
The beverage selected is brewed and then dispensed into the cups.

**Note:** The coffee is prepared in two stages. Wait until the process is fully completed.

## Preparing coffee using ground coffee

The appliance must be switched on and the water tank must be filled.

- 1 Turn the function selector to position 2.
- 2 Pull out the appliance from the built-in unit (see section Pulling out the appliance).
- 3 Using the measuring spoon, fill the ground coffee drawer with a maximum of two level spoons of ground coffee. Close the ground coffee drawer.



**Note:** Do not fill the drawer with beans or instant coffee.

- 4 Slide the appliance into the built-in unit as far as it will go.
- 5 Use the rotary selector to select the desired beverage (beverages made from ground coffee are identified with the ☞ symbol).
- 6 Place a cup under the coffee dispenser.
- 7 Touch the > symbol.
- 8 Set the quantity using the rotary selector.
- 9 Touch the > symbol.
- 10 Set the temperature using the rotary selector.
- 11 Confirm the settings using ✓.
- 12 Press ▶ to start.

The beverage is brewed and then runs into the cup. To prepare another cup, refill with ground coffee and repeat the process.

#### Notes

- While the beverage is dispensed, the ■ symbol is displayed. Touch this symbol to stop the beverage being prepared.
- If coffee is not dispensed within 90 seconds, the brewing chamber empties itself automatically to prevent an overflow.
- The Aroma function is unavailable when using ground coffee. Similarly, it is not possible to dispense two cups at once when using ground coffee.

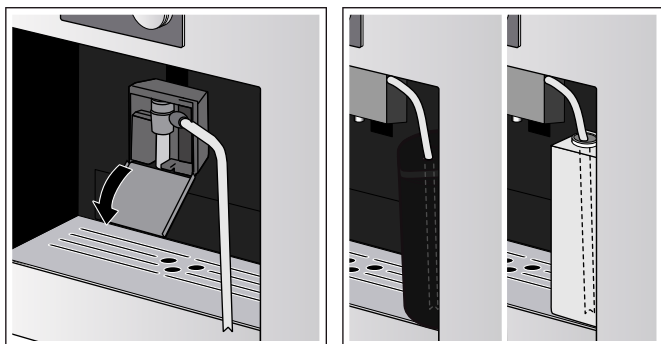
## Preparing a coffee with milk

### Risk of burns!

The milk system becomes very hot. After use, allow it to cool down first before touching it.

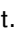


You can decant the milk into the milk container supplied, or simply use the milk directly from the milk carton.

- Push the coffee dispenser right to the bottom.
- Open the flap on the coffee dispenser.
- Feed the milk hose out through the opening on the right and close the flap again.
- Place the filled milk container on the right next to the coffee dispenser and connect the milk hose to the top of the milk container.
  - or -
  - Place the filled milk carton on the right next to the coffee dispenser. Insert the milk hose into the milk carton. The grooved end of the milk hose must be immersed in the milk.



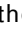


To prepare a drink:

The appliance must be switched on. The water tank and bean container must be filled.

- 1 Rotate function selector to position 2.
- 2 Select Latte Macchiato, Cappuccino or Caffè Latte with the rotary selector. In order to select a drink made from ground coffee, fill the ground coffee drawer first.
- 3 Place a cup or glass under the coffee dispenser.
- 4 Press  to start.
  - or -
  - Touch the  symbol first, then set the size, strength and temperature using the rotary selector and confirm with .

The milk is drawn in and prepared, after which the coffee is brewed.

### Notes

- While the beverage is dispensed, the  symbol is displayed. Touch this symbol to stop the beverage being prepared.
- Using the  symbol, you can save the current beverage: touch the  symbol, turn the function selector to a free memory location, save the entry (see section Individual beverages).
- Dried-on milk residues are difficult to remove, so always clean the milk system after every use (see section Cleaning the milk system).

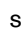


## Preparing milk froth and warm milk

### Risk of burns!

The milk system becomes very hot. After use, allow it to cool down first before touching it.




To prepare a drink:

The appliance must be switched on.

- 1 Rotate function selector to position 2.
- 2 Connect milk hose (see section Preparing coffee with milk).
- 3 Select "Milk froth" or "Warm milk" with the rotary selector.
- 4 Place a cup or glass under the coffee dispenser.
- 5 Touch the  symbol.
- 6 Set the size using the rotary selector.
- 7 Press  to confirm the settings.
- 8 Press  to start.

The milk is drawn in and subsequently flows into the cup or the glass.

### Notes





- While the beverage is dispensed, the  symbol is displayed. Touch this symbol to stop the beverage being prepared.
- Using the  symbol, you can save the current beverage: touch the  symbol, turn the function selector to a free memory location, save the entry (see section Individual beverages).
- Dried-on milk residues are difficult to remove, so always clean the milk system after every use (see section Cleaning the milk system).

## Preparing hot water

### Risk of burns!

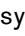


The milk system becomes very hot. After use, allow it to cool down first before touching it.

The appliance must be switched on and the water tank must be filled.

- 1 Turn the function selector to position 2.
- 2 Select "Hot water" using the rotary selector.
- 3 Place a cup or a glass under the coffee dispenser.
- 4 Touch the  symbol.
- 5 Set the quantity using the rotary selector.
- 6 Touch the  symbol.
- 7 Set the temperature using the rotary selector.
- 8 Confirm with .
- 9 Press  to start.

The water is heated and then flows into the cup or glass.

### Notes

- While the beverage is dispensed, the  symbol is displayed. Touch this symbol to stop the beverage being prepared.
- Using the  symbol, you can save the current beverage: touch the  symbol, turn the function selector to a free memory location, save the entry (see section Individual beverages).

## Setting the grinding level

### Risk of injury!

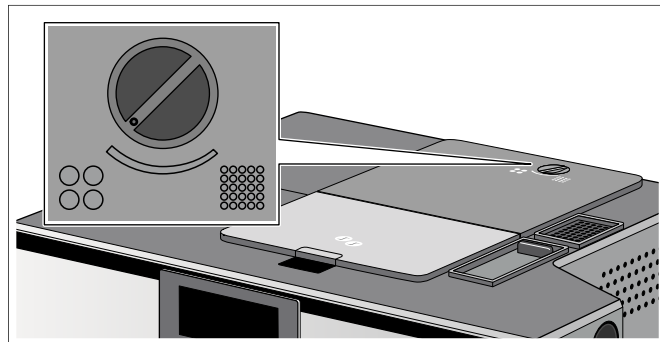
Do not reach into the grinding unit.

Using the rotary selector for the grinding level, you can set your preferred fineness for the ground coffee.

### Caution!

The appliance could be damaged. Only adjust the grinding level when the grinding unit is running.

With the grinding unit running, set the rotary selector between a fine grinding level and a coarser grinding level.



### Notes

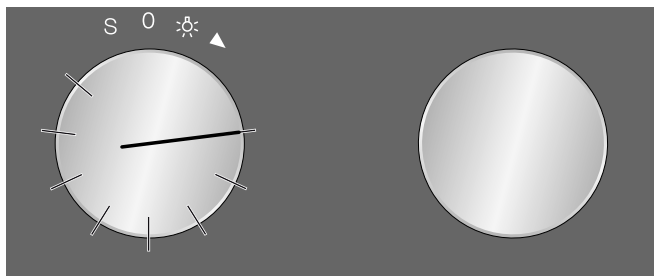
- The new setting only becomes noticeable after the second cup of coffee.
- Set a finer grinding level with dark-roasted beans and a coarser grinding level with lighter beans.



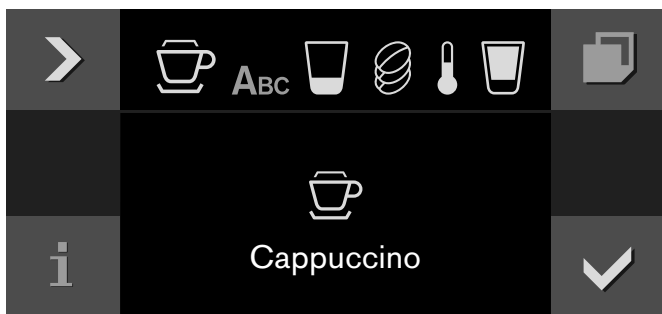
## Individual beverages

You can define and save instructions for up to eight individual beverages.

- 1 Turn the function selector to one of the 8 memory locations.



- 2 Touch the symbol.
- 3 Use the symbol to select the desired beverage, size, strength, temperature and coffee-milk ratio and use the rotary selector to save the settings.



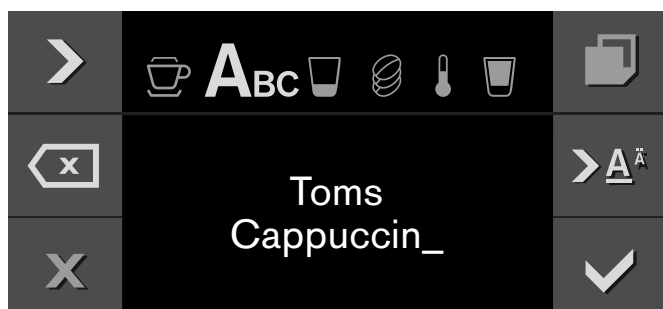
- 4 Enter the name of the beverage in "ABC".

Rotary selector	Selects letters A new word always begins with a capital letter.
-----------------	--

	Press briefly: moves the cursor right Press and hold: shifts to umlauts and special characters Press twice: adds a line break
--	---

	Press briefly: moves the cursor right Press and hold: shifts to normal characters Press twice: adds a line break
--	--

	Deletes letters
--	-----------------



- 5 Save with or cancel with and exit the menu.

- 6 Press to start.

Depending on the beverage selected, the beans will be ground first, then the milk prepared and finally the coffee brewed.

### Notes

- While the beverage is dispensed, the symbol is displayed. Touch this symbol to stop the beverage being prepared.
- For entering a name, Latin characters, certain special characters and numbers are available.

---

## Child lock

---

The appliance has a childproof lock to prevent children operating it accidentally.


### Notes

- You need to set the childproof lock to "available" in the basic settings (see section entitled 'Basic settings').
- If there is a power cut after the childproof lock has been activated, the childproof lock may be off when the power comes back on again.


## Activating the child lock

### Prerequisite:

The function selector is set to **0**.

Touch and hold the  symbol for at least 6 seconds.




The child lock is activated. The  symbol is shown at the top of the display.

## Deactivating the child lock

### Prerequisite:

The function selector is set to **0**.

Touch and hold the  symbol for at least 6 seconds.



The child lock is deactivated. You can set the appliance as normal.













## Basic settings

Your appliance can be individually adjusted in the basic settings.





- 1 Turn the function selector to **S**.
- 2 Select "Basic settings" using the rotary selector.
- 3 Touch the ✓ symbol.
- 4 Turn the rotary selector to select the required basic setting.

- 5 Touch the ↖ symbol.
- 6 Set the basic setting using the rotary selector.
- 7 Save with ✓ or cancel with ✕ and exit the current basic setting.
- 8 Turn the function selector to **0** to exit the basic settings menu.

The changes are saved.

	Basic setting	Permitted settings	Explanation
	Brightness	Level 1, 2, 3, 4, 5*, 6, 7, 8	Sets the display brightness
	Hibernate mode	with logo*/without logo	Hibernate mode display with or without GAGGENAU logo
	Display	Reduced*/Standard	If the 'Reduced' setting has been selected, only the most important information will be shown on the display after a short time.
	Touch field colour	Grey* / White	Selects the colour of the symbols on the touch fields
	Touch field tone	Tone 1* / Tone 2 / Off	Selects an audible signal for when a touch field is touched
	Touch field tone volume	Level 1, 2, 3, 4, 5*, 6, 7, 8	Sets the volume of the touch field tone
	Light setting	Lighting options 1*-7	○ Light off ● Light on △ Light only on when a beverage is being dispensed
	Capacity	+/- 5 up to 50 ml	Adjust the capacity to individual cup sizes. First select the beverage and then set the capacity.
	Beverage types clear text display	on* / off	Beverage name display on or off. Off: Only the symbol will be displayed.
	Automatic shut-off	5 minutes to 12 hours	Set the time after which the appliance automatically rinses and switches off.
	Water filter	Available/not available*	Available: Operating the appliance with a water filter. Not available: Operating the appliance without a water filter.
	Water hardness	1-4*	Briefly immerse the enclosed test strips in fresh mains water, allow them to drip and then read the result after a minute. Set the measured water hardness.

\* Factory setting

	Language	German* / French / Italian / Spanish / Portuguese / Dutch / Danish / Swedish / Norwegian / Finnish / Greek / Turkish / Russian / Polish / Czech / Slovenian / Slovakian / Arabic / Hebrew / Japanese / Korean / Thai / Chinese / English US / English	Select language for text display <b>Note:</b> If the language is changed, the system restarts. This takes a few seconds. The basic settings menu is also closed.
	Factory settings	Reset the appliance to the factory settings	Confirm the question "Delete all individual settings made and reset to factory settings?" by pressing ✓ or cancel by pressing X. <b>Note:</b> Individual drinks will also be deleted if the appliance is reset to factory settings. After resetting the factory settings, the "Initial settings" menu is displayed.
	Demo mode	On / Off*	Only for demonstration purposes. The "Off" setting must be activated for normal operation. The setting is only possible in the first 3 minutes after switching on the appliance.
	Childproof lock	Not available*/Available	Available: The childproof lock can be activated (see section entitled 'Childproof lock').
* Factory setting			

## Daily maintenance and cleaning

### Daily maintenance

Every time the appliance is switched on or switched to **0**, it rinses automatically. Exception: the appliance was only switched off a few minutes beforehand or no coffee was dispensed before it was switched to **0**.

#### **⚠ Risk of electric shock!**

Before cleaning the appliance, switch it off using the main switch. Do not use a steam cleaner.

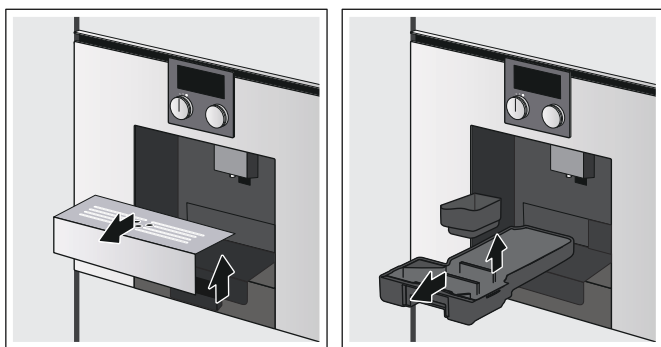
#### **Caution!**

Surface damage!

- Do not use any cleaning agents containing alcohol or spirits.
- Do not use concentrated acetic acid or citric acid-based cleaning agents or essences.
- Do not use abrasive cloths or cleaning agents.
- Always remove any residues of limescale, coffee, milk and descaling solution immediately. Such residues may cause surfaces to corrode.
- New sponge cloths may contain salts. Salts can cause rust film on stainless steel and must therefore always be washed out thoroughly before use.

#### **Notes**

- The drip tray and coffee dregs container should be emptied and cleaned every day in order to prevent deposits.
  - If the appliance has not been used for a prolonged period of time (e.g. while you are on holiday), clean the entire appliance thoroughly, including the milk system and brewing unit.
- 1 Wipe the housing with a soft, damp cloth.
  - 2 Rinse out the water tank with clear, fresh water.
  - 3 Remove the shelf and pull out the drip tray.

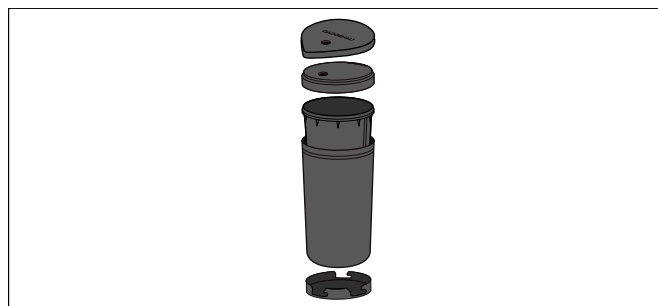


- 4 Empty the drip tray and coffee dregs container.
- 5 Clean the drip tray and the coffee dregs container or put them in the dishwasher.

- 6 Clean the shelf with a commercially available limescale remover. Allow the limescale remover to briefly take effect and then rinse with water. Dry the shelf immediately.

**Note:** Do not put the shelf in the dishwasher. Immediately remove residues from the shelf to avoid stains.

- 7 Wipe the interior of the appliance where the trays rest.
- 8 Dismantle the milk container.
- 9 Clean the metal casing by hand. Do not put it in the dishwasher. All other components can be cleaned in the dishwasher.



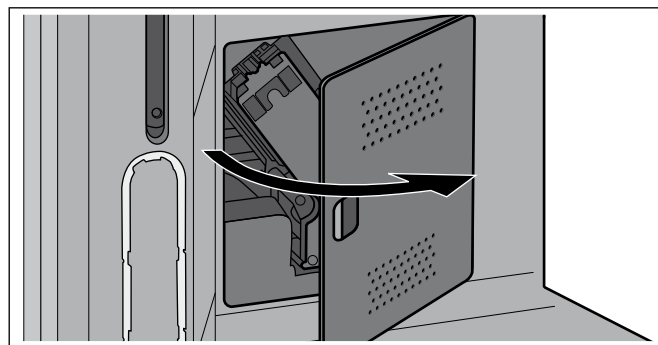
- 10 Refit all of the components.

### Cleaning the brewing unit

#### **Notes**

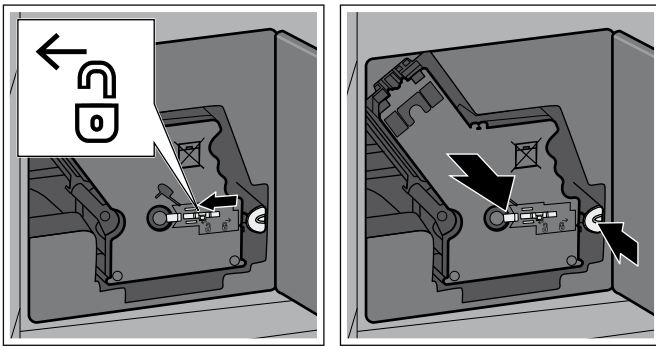
- Regularly clean the brewing unit by hand in addition to the automatic cleaning programme.
- Do not use washing-up liquid or other cleaning agents to clean the brewing unit and do not put the brewing unit in the dishwasher.

- 1 Turn the function selector to **0**.
- 2 Pull out the appliance fully (see section Pulling out the appliance).
- 3 Switch off the appliance using the main switch.
- 4 Use the door handle to open the brewing unit door outwards.

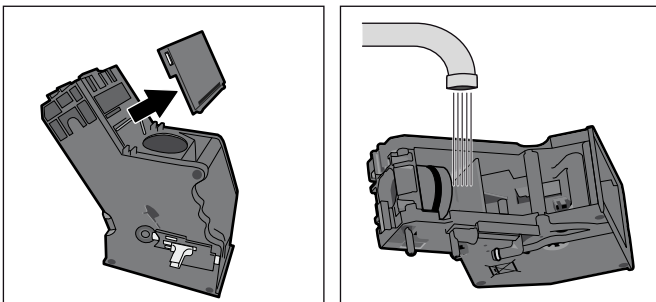


- 5 Slide the red brewing unit lock all the way to the left.

- 6 Press the red button, hold the brewing unit on the recessed grips and carefully remove it.



- 7 Clean the brewing unit thoroughly under running water.  
8 Remove the cover and clean the filter under running water.



- 9 Clean the interior of the appliance thoroughly, taking care to remove any coffee residues.  
10 Allow the brewing unit and the interior of the appliance to dry.  
11 Refit the cover.  
12 Insert the brewing unit as far as it will go. Slide the red lock all the way to the right and close the door.

## Service programmes

Every so often – the exact frequency depends on usage and water hardness – one of the following messages will appear in the display in place of the coffee selection:

- Please clean milk system
- Please change water filter
- Please clean
- Please descale
- Please descale and clean

Then the **i**<sup>®</sup> warning symbol lights up.

The water filter should be changed immediately at this point and the appliance cleaned or descaled using the appropriate programme. The appliance could otherwise be damaged.

The service programmes can also be started at any time without notification from the display. Set the function selector to **S**, and select and run the desired programme.

### Notes

- For each of the service programmes, use descaling and cleaning agents as described in the instructions and observe the safety information.
- Do not drink the liquids.
- Never use vinegar, vinegar-based products, citric acid or citric acid-based products for descaling.
- For cleaning and descaling only use the tablets intended for such purpose. They were specially developed for this fully automatic espresso machine, and replacements are available from after-sales service (see section Accessories).
- Never put descaling tablets or other descaling agents in the ground coffee drawer.
- Never interrupt the service programme.
- If one of the service programmes is interrupted, e.g. by a power failure, proceed as follows:
  - 1 Rinse the water tank.
  - 2 Fill the tank with fresh water up to the “max” indicator.
  - 3 Place a container under the coffee dispenser.
  - 4 Touch the ✓ symbol.

The cleaning programme runs for about 2 minutes.

## Cleaning the milk system


### Risk of burns!

The milk system becomes very hot. After use, allow it to cool down first before touching it.

**Note:** All components can also be cleaned in the dishwasher.

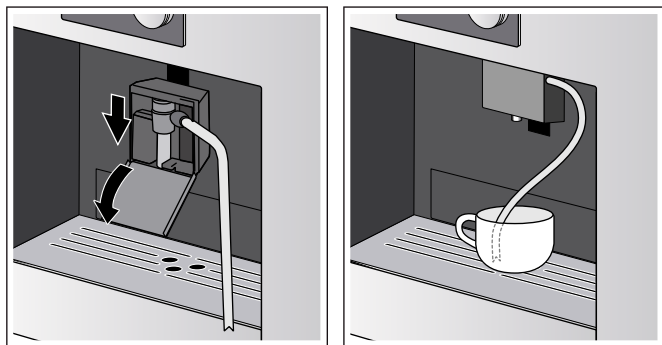
The milk system can be automatically precleaned (Quick rinse for the milk system). In addition, the milk frother must be taken apart and cleaned (Cleaning the milk system).




### Quick rinse for the milk system

- 1 Turn the function selector to **S**.
- 2 Use the rotary selector to select "Quick rinse programme for milk system" and confirm using .



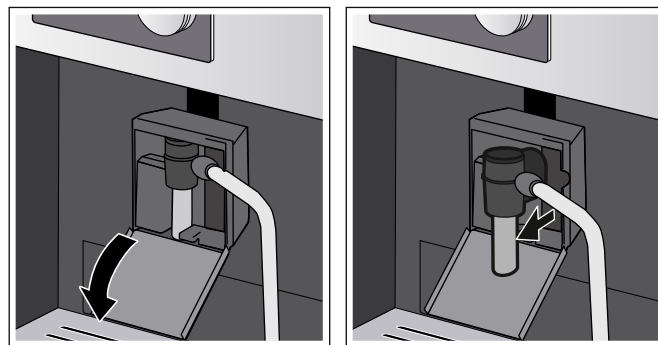
- 3 Open the flap on the coffee dispenser, connect the milk hose and feed it out through the opening on the right. Close the flap.
- 4 Place a cup under the milk frother and place the end of the milk hose in the cup.



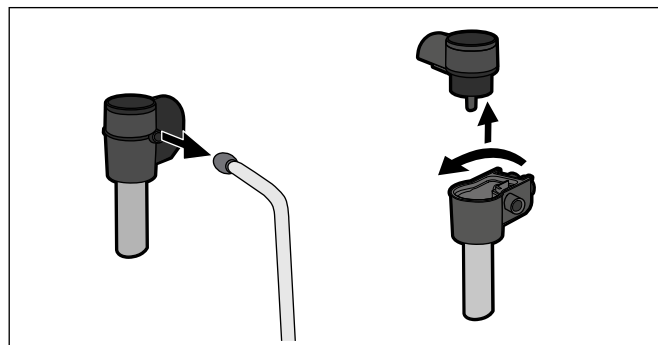
- 5 Confirm using  and start by using . The appliance automatically cleans the milk system. It takes about a minute to complete the rinsing process.
- 6 Confirm with .
- 7 Empty the cup and clean the milk hose.

## Cleaning the milk system

- 1 Open the flap on the coffee dispenser and pull out the milk frother forwards.



- 2 Wipe the holder for the milk frother with a damp cloth.
- 3 Remove the milk hose. Turn the upper part in an anti-clockwise direction and remove from the lower part.



- 4 Clean individual parts with detergent solution and a soft cloth or put them into the dishwasher (cutlery basket).
- 5 Put the individual parts back together until the two marks are vertically stacked. Then insert the milk frother into the appliance as far as it will go.

## Cleaning

**Duration: approx. 7 minutes**

Clean the brewing unit before the service programme starts (see section Cleaning the brewing unit).

- 1 Turn the function selector to **S**.
- 2 Select "Cleaning programme" using the rotary selector.
- 3 Touch the ✓ symbol.  
The cleaning programme starts. The notes in the display guide you through the programme.
- 4 Empty and replace the drip tray and the coffee dregs container.
- 5 Confirm using ✓ and start by using ▶.  
The cleaning programme runs for about 1 minute.
- 6 Place a cleaning tablet in the ground coffee drawer and close the drawer again.
- 7 Confirm using ✓ and start by using ▶.  
The cleaning programme runs for about 6 minutes.
- 8 Empty and replace the drip tray.
- 9 Touch the ✓ symbol.

The cleaning programme has finished. The appliance is ready for operation.

## Descaling

**Duration: approx. 25 minutes**

Use the descaling container supplied. Once the programme has ended, clean the container with washing-up liquid or put it in the dishwasher.

**Note:** If a filter is installed in the water tank, it must be removed before the service programme starts and must not be replaced until the programme has ended.

- 1 Turn the function selector to **S**.
- 2 Select "Descaling programme" using the rotary selector.
- 3 Touch the ✓ symbol.  
The descaling programme starts. The notes in the display guide you through the programme.
- 4 Empty and replace the drip tray and the coffee dregs container.
- 5 Touch the ✓ symbol.
- 6 Place the descaling container under the milk frother and put the milk hose into the container.
- 7 Touch the ✓ symbol.

### Notes

- If the milk frother is not fitted, the message "Please fit milk frother" appears. Fit the milk frother and confirm using ✓.
- If the water filter is activated, the message "Remove water filter" appears. Remove the water filter and confirm using ✓.

- 8 Fill the empty water tank with lukewarm water up to the "calc" (0.5 l) mark and then dissolve two descaling tablets in this water.

- 9 Confirm using ✓ and start by using ▶.  
The descaling programme runs for about 24 minutes.

**Note:** If there is too little descaling solution in the water tank, the message "Fill water tank with water and descaler" appears. Fill the empty water tank with lukewarm water up to the "calc" (0.5 l) mark and then dissolve two descaling tablets in this water. Confirm with ✓. The descaling programme will continue.

- 10 When requested to do so by the message in the display, rinse the water tank and then fill it with fresh water up to the "max" mark.
- 11 Confirm using ✓ and start by using ▶.  
The descaling programme runs for about 1 minute and then rinses.
- 12 Empty and replace the drip tray.
- 13 Touch the ✓ symbol.

The descaling programme has finished. Touch the ✓ symbol. If a filter is used, re-insert it now. The appliance is ready for operation.

### Notes

- Wipe down the appliance with a soft, damp cloth to remove descaling solution residues immediately. Corrosion can form under such residues.
- New sponge cleaning cloths can contain salts. As salts can cause surface rust on stainless steel, rinse the cloths thoroughly before use.



## Cleaning and descaling

**Duration: approx. 32 minutes**

The cleaning and descaling programme combines the individual cleaning and descaling functions. If the two programmes are both due at around the same time, the fully automatic espresso machine automatically suggests this service programme.

Use the descaling container supplied. Once the programme has ended, clean the container with washing-up liquid or put it in the dishwasher.

Clean the brewing unit before the service programme starts (see section Cleaning the brewing unit).

**Note:** If a filter is installed in the water tank, it must be removed before the service programme starts and must not be replaced until the programme has ended.

- 1 Turn the function selector to **S**.
- 2 Select "Cleaning and descaling programme" using the rotary selector.
- 3 Touch the ✓ symbol.  
The cleaning and descaling programme starts. The notes on the display guide you through the programme.
- 4 Empty and replace the drip tray and the coffee dregs container.
- 5 Touch the ✓ symbol.
- 6 Place the descaling container under the milk frother and put the milk hose into the container.
- 7 Confirm using ✓ and start by using ▶.  
The cleaning and descaling programme runs for about 1 minute.
- 8 Place a cleaning tablet in the ground coffee drawer and close the drawer again.
- 9 Touch the ✓ symbol.  
**Note:** If the water filter is activated, the message "Remove water filter" appears. Remove the water filter and confirm using ✓.
- 10 Fill the empty water tank with lukewarm water up to the "calc" (0.5 l) mark and then dissolve two descaling tablets in this water.
- 11 Confirm using ✓ and start by using ▶.  
The cleaning and descaling programme runs for about 24 minutes.  
**Note:** If there is too little descaling solution in the water tank, the message "Fill the water tank with water and descaler" appears. Fill the empty water tank with lukewarm water up to the "calc" (0.5 l) mark and then dissolve two descaling tablets in this water. Confirm with ✓. The cleaning and descaling programme will continue.
- 12 When requested to do so by the message in the display, rinse the water tank and then fill it with fresh water up to the "max" mark.
- 13 Confirm using ✓ and start by using ▶.  
The cleaning and descaling programme runs for about 7 minutes and then rinses.

14 Empty and replace the drip tray.

15 Touch the ✓ symbol.

The cleaning and descaling programme is finished. Touch the ✓ symbol. If a filter is used, re-insert it now. The appliance is ready for operation.

### Notes

- Wipe down the appliance with a soft, damp cloth to remove descaling solution residues immediately. Corrosion can form under such residues.
- New sponge cleaning cloths can contain salts. As salts can cause surface rust on stainless steel, rinse the cloths thoroughly before use.

## Simple troubleshooting

Problem	Cause	Remedial action
Display screen "Refill beans". Although the bean container is full, the appliance does not grind the coffee beans.	Beans are not falling into the grinding unit (beans that are too oily may stick to the bean container).	Change the type of coffee if necessary. Wipe out the empty bean container with a dry cloth.
No hot water dispensed.	The milk frother or its holder is blocked.	Clean the milk frother or its holder (see section <i>Cleaning the milk system</i> ).
Milk froth insufficient or too runny. The milk frother does not draw the milk in.	The milk frother or its holder is blocked.	Clean the milk frother or its holder (see section <i>Cleaning the milk system</i> ).
	The air valve in the holder for the milk frother is clogged up.	Carefully clean the air valve using a moistened cotton bud, for example (see the enclosed quick reference guide).
	Milk not suitable for foaming.	Use milk with a fat content of at least 1.5%.
	The milk frother is not correctly assembled.	Wet the milk frother parts and press together firmly.
Coffee dispensing slows to a trickle or stops completely.	The appliance is calcified.	Descal the appliance using 2 descaling tablets and repeat the procedure if necessary.
	The grinding level is too fine. The ground coffee is too fine.	Adjust the grinding level to a coarser setting. Use coarser ground coffee.
Coffee has no "crema" (layer of froth).	The appliance is calcified.	Descal the appliance using 2 descaling tablets and repeat the procedure if necessary.
	Unsuitable type of coffee.	Use a type of coffee with a higher proportion of robusta beans.
	The beans are no longer fresh for roasting.	Use fresh beans.
The coffee is too "acidic".	The grinding level is not suitable for the coffee beans.	Set a finer grinding level.
	The grinding level is too coarse. The ground coffee is too coarse.	Adjust the grinding level to a finer setting. Use finer ground coffee.
The coffee is too "bitter".	Unsuitable type of coffee.	Use a darker roast.
	Grinding level is too fine. The ground coffee is too fine.	Adjust the grinding level to a coarser setting. Use coarser ground coffee.
Display screen "Call after-sales service".	Unsuitable type of coffee.	Change the type of coffee.
	The appliance has a fault.	Call after-sales service (see the enclosed "Service Worldwide" brochure).
The water filter does not stay in position in the water tank.	The water filter is not mounted correctly.	Firmly press the water filter straight down into the tank connection.
The coffee grounds are not compact and are too wet.	The grinding level is too fine or too coarse. Too little ground coffee is used.	Set a coarser or finer grinding level or use two level measuring spoons of ground coffee.
Display shows "Clean brewing unit".	Brewing unit is soiled.	Clean the brewing unit.
	Too little ground coffee in the brewing unit.	Clean the brewing unit. Add no more than two level measuring spoons of ground coffee.
	The brewing unit's mechanism is stiff.	Clean the brewing unit.
Coffee or milk froth quality varies considerably.	The appliance is calcified.	Descal the appliance using 2 descaling tablets and repeat the procedure if necessary.
Water dripped onto the inner floor of the appliance when the drip tray was removed.	Drip tray removed too early.	Wait a few seconds after the last drink was dispensed before removing the drip tray.

<b>Problem</b>	<b>Cause</b>	<b>Remedial action</b>
Display screen "Temperature too low".	The system is too cold.	Wait until the temperature has been reached. The display goes out.
Display screen "Power fluctuations".	Overvoltage or undervoltage in the domestic installation.	Wait for a few minutes. If the display does not go out, have the domestic installation checked.
Display screen "Leave device to cool".	Appliance is too hot.	Switch off appliance for 30 minutes.
Display screen "Switch off the appliance at the mains switch and switch on again after 30 seconds!"	Appliance is too warm. Brewing unit is soiled.	Allow the appliance to cool down. Clean the brewing unit.

**Gaggenau Hausgeräte GmbH**  
Carl-Wery-Straße 34  
81739 München  
GERMANY  
[www.gaggenau.com](http://www.gaggenau.com)

**GAGGENAU**

